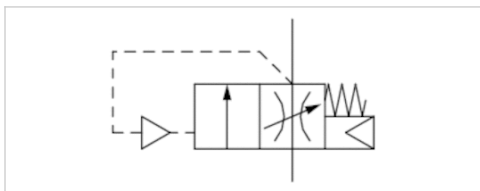


# Filling valve, Series AS3-SSV

- adjustable filling time
- Compressed air connection G 3/8 G 1/2
- suitable for ATEX



Type	Poppet valve, Can be assembled into blocks
Sealing principle	Soft sealing
Certificates	suitable for ATEX
Working pressure min./max.	2,5 ... 16 bar
Ambient temperature min./max.	-10 ... 50 °C
Medium temperature min./max.	-10 ... 50 °C
Medium	Compressed air Neutral gases
Max. particle size	40 µm
Weight	0,43 kg



## Technical data

Part No.	Port	Flow	
		Qn	
R412007272	G 3/8	4500 l/min	1)
R412007273	G 1/2	4500 l/min	1)
R412007275	G 1/2	4500 l/min	2)

Nominal flow Qn with secondary pressure p2 = 6 bar at Δp = 1 bar

- 1) Suitable for use in Ex zones 1, 2, 21, 22.,
- 2) With adjustment screw lock, Suitable for use in Ex zones 1, 2, 21, 22.

## Technical information

The pressure dew point must be at least 15 °C under ambient and medium temperature and may not exceed 3 °C .

A change in the flow direction (from air supply on the left to air supply on the right) occurs by rotating installation by 180° about the vertical axis. Please see the operating instructions for further details.

The filling valve builds up pressure slowly in the pneumatic systems, i.e. prevents a sudden pressure build-up during a recommissioning after a mains pressure failure or avoids emergency OFF switching. This allows dangerous abrupt cylinder motions to be avoided.

Do not position filling valves or filling units upstream of open consumers, such as nozzles, air barriers, air curtains, since these may prevent through connection of components.

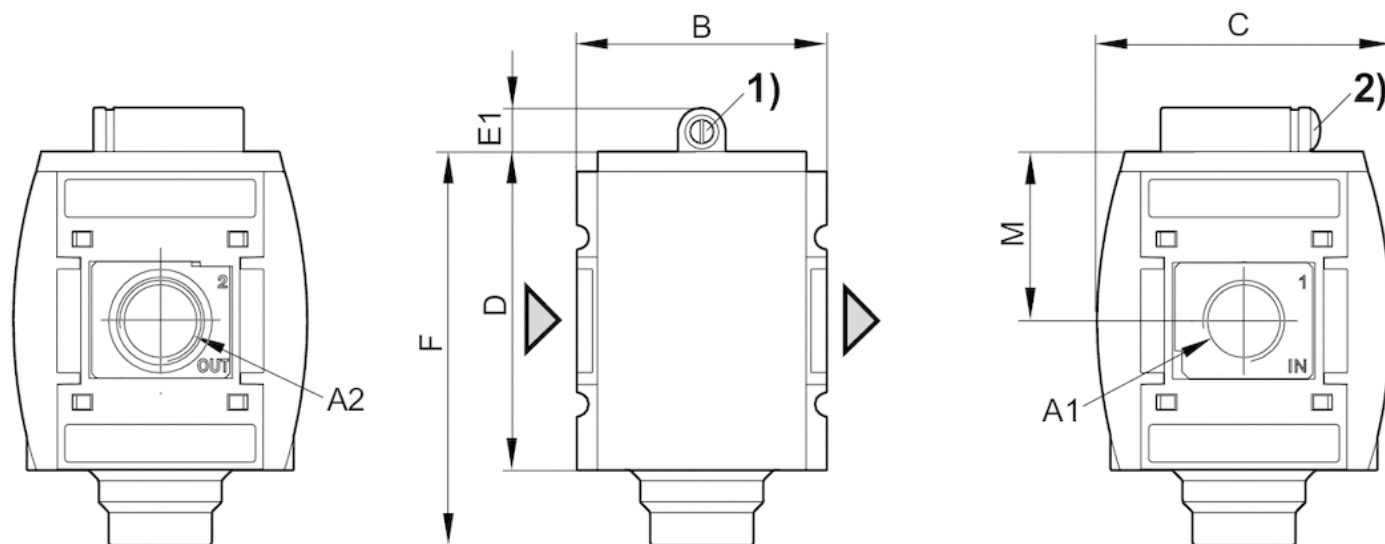
Suitable for use in Ex zones 1, 2, 21, 22.

## Technical information

Material	
Housing	Polyamide
Front plate	Acrylonitrile butadiene styrene
Seals	Acrylonitrile butadiene rubber
Threaded bushing	Die cast zinc

## Dimensions

### Dimensions



A1 = input  
A2 = output

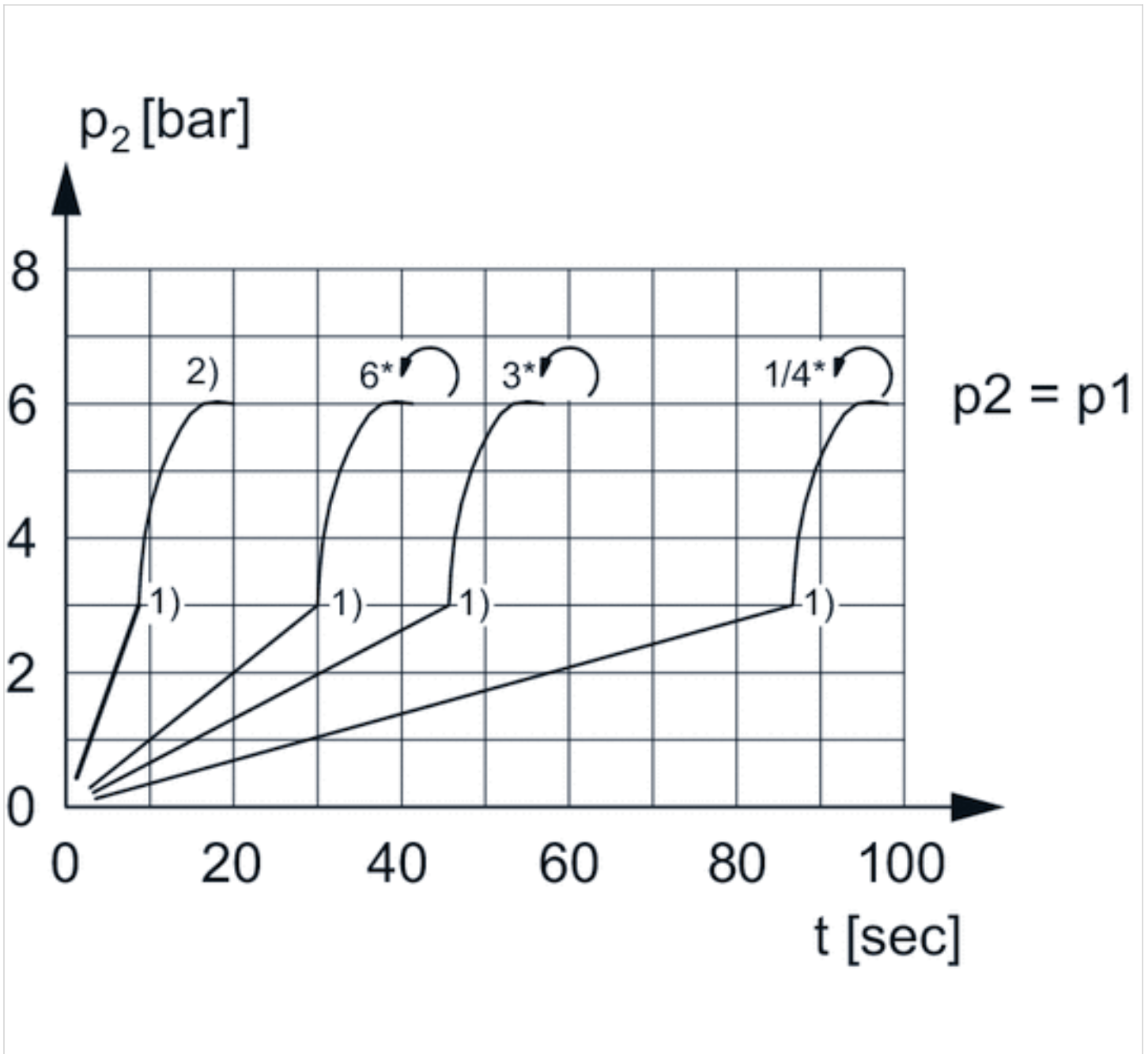
- 1) Adjustment screw for filling time
- 2) Adjustment screw lock

Dimensions in mm

A1	A2	B	C	D	E1	F	M
G 3/8	G 3/8	63	74	80	11	99	42.5
G 1/2	G 1/2	63	74	80	11	99	42.5

Diagrams

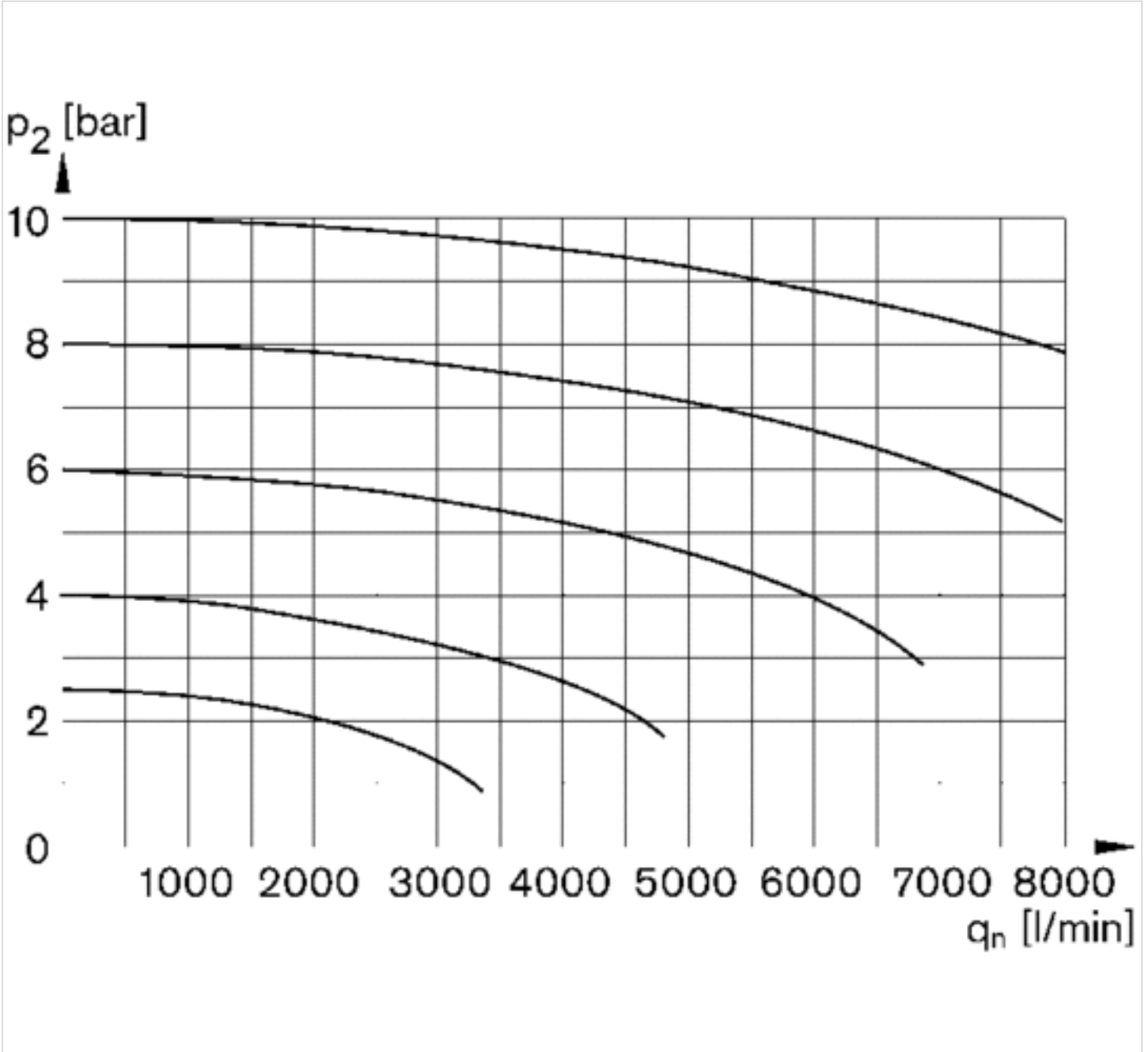
secondary pressure while filling



$p_1$  = working pressure  
 $p_2$  = secondary pressure  
 $t$  = filling time, adjustable via adjustment screw (throttle)

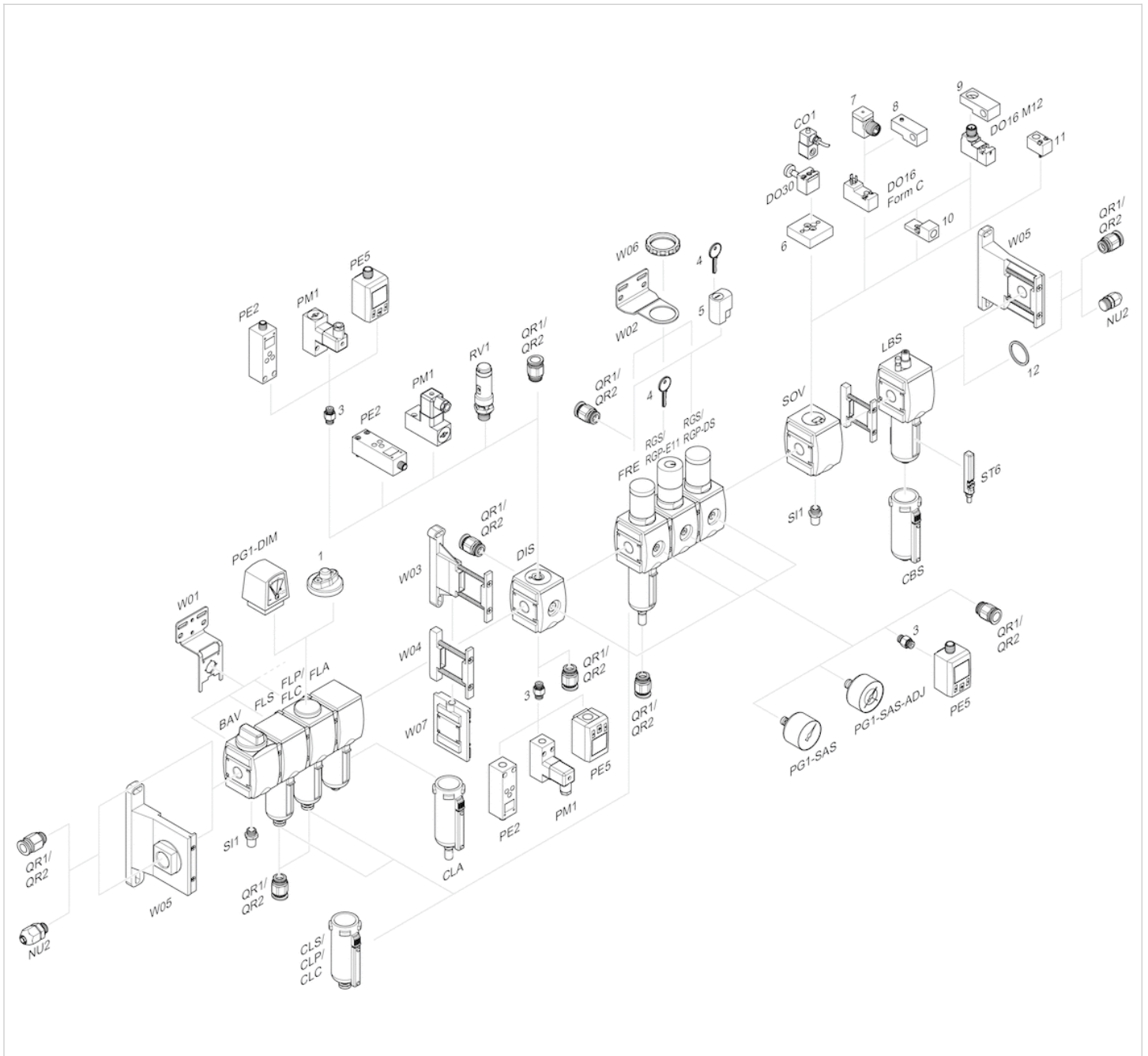
- 1) Switching point: adjustable filling time, fixed change-over pressure  $\approx 0.5 \times p_1$  (50%)
- 2) Throttle fully opened
- \* Adjustment screw rotations

### Flow rate characteristic



$p_2$  = secondary pressure  
 $q_n$  = nominal flow

# Accessories overview



- 1 = contamination display
- 3 = Double nipple
- 4 = Key for E11 locking
- 5 = mortise lock
- 6 = Transition plate DO30
- 7 = Adapter, Series CON-VP
- 8 = Mounting aid DO16, form C
- 9 = Mounting aid DO16, M12
- 10 = Adapter for external pilot air
- 11 = Adapter pneumatic operation
- 12 = Sealing ring

# Efficient pneumatic solutions, our program: cylinders and drives, valves and valve systems, air supply management



Visit us: [Emerson.com/Aventics](https://www.emerson.com/Aventics)

Your local contact: [Emerson.com/contactus](https://www.emerson.com/contactus)



Emerson.com



[Facebook.com/EmersonAutomationSolutions](https://www.facebook.com/EmersonAutomationSolutions)



[LinkedIn.com/company/Emerson-Automation-Solutions](https://www.linkedin.com/company/Emerson-Automation-Solutions)



[Twitter.com/EMR\\_Automation](https://twitter.com/EMR_Automation)

An example configuration is depicted on the title page. The delivered product may thus vary from that in the illustration. Subject to change. This Document, as well as the data, specifications and other information set forth in it, are the exclusive property of AVENTICS GmbH. It may not be reproduced or given to third parties without its consent. Only use the AVENTICS products shown in industrial applications. Read the product documentation completely and carefully before using the product. Observe the applicable regulations and laws of the respective country. When integrating the product into applications, note the system manufacturer's specifications for safe use of the product. The data specified only serve to describe the product. No statements concerning a certain condition or suitability for a certain application can be derived from our information. The information given does not release the user from the obligation of own judgement and verification. It must be remembered that the products are subject to a natural process of wear and aging.

The Emerson logo is a trademark and service mark of Emerson Electric Co. Brand logotype are registered trademarks of one of the Emerson family of companies. All other marks are the property of their respective owners. © 2020 Emerson Electric Co. All rights reserved.  
2020-12



**CONSIDER IT SOLVED™**